

VDH Algorithm for Evaluating a Child with COVID-19 Symptoms or Exposure

FOR PARENTS AND GUARDIANS



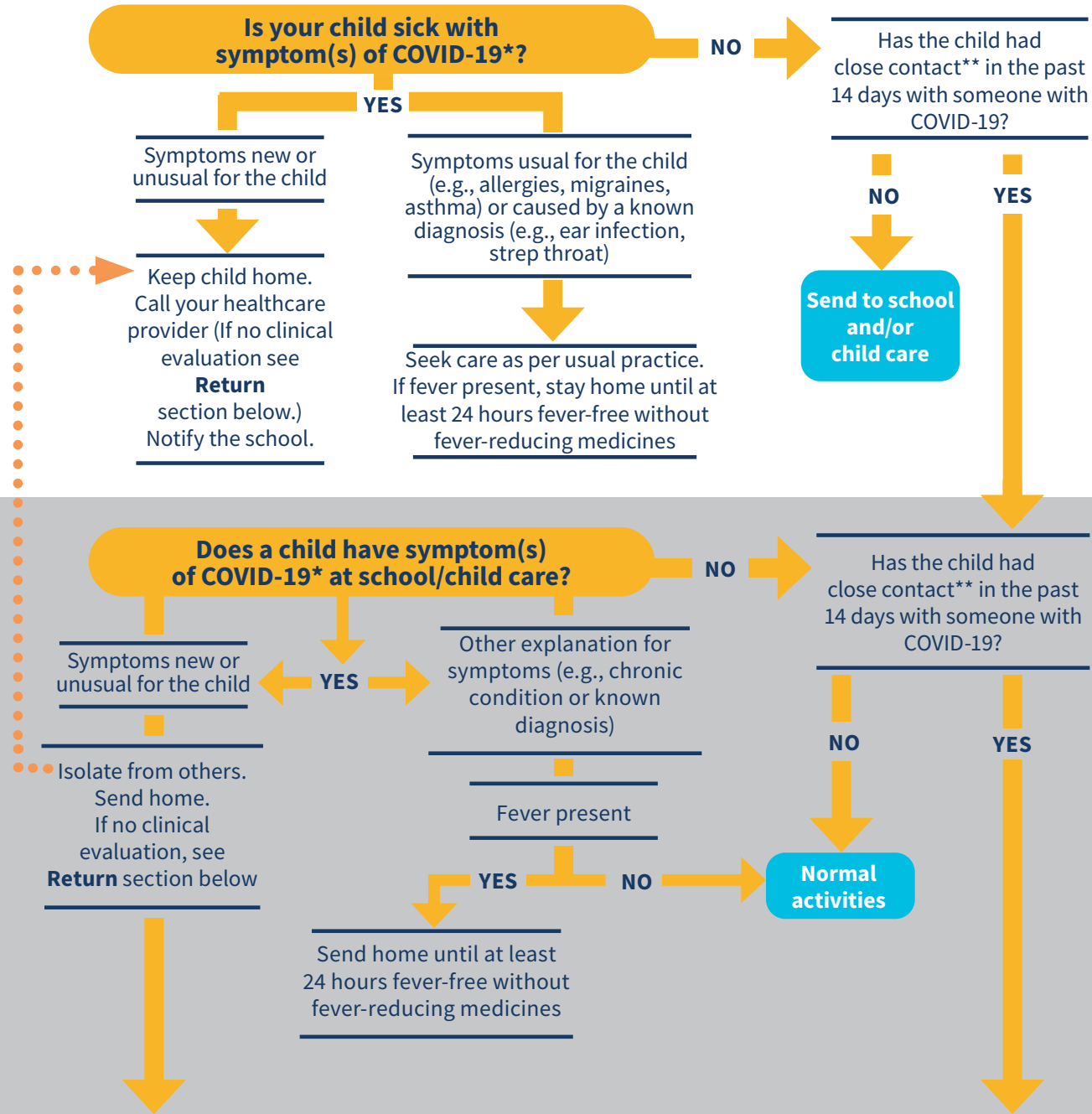
***Symptoms** of COVID-19 include fever ($\geq 100.4^{\circ}\text{F}$) or chills, fatigue (more tired than usual), headache, muscle aches, cough, nasal congestion or runny nose, new loss of taste or smell, sore throat, shortness of breath or difficulty breathing, abdominal pain, diarrhea, nausea or vomiting, new onset of poor appetite or poor feeding.

FOR SCHOOLS AND CHILD CARE FACILITIES



****Close contact** means being within 6 feet of a person with COVID-19 for a total of 15 minutes or more over a 24-hour period, or having direct exposure to respiratory secretions.

***** ≥ 50 cases per 100,000 population in the past 14 days.**
Click here for local information:
www.vdh.virginia.gov/coronavirus/key-measures/pandemic-metrics/school-metrics/

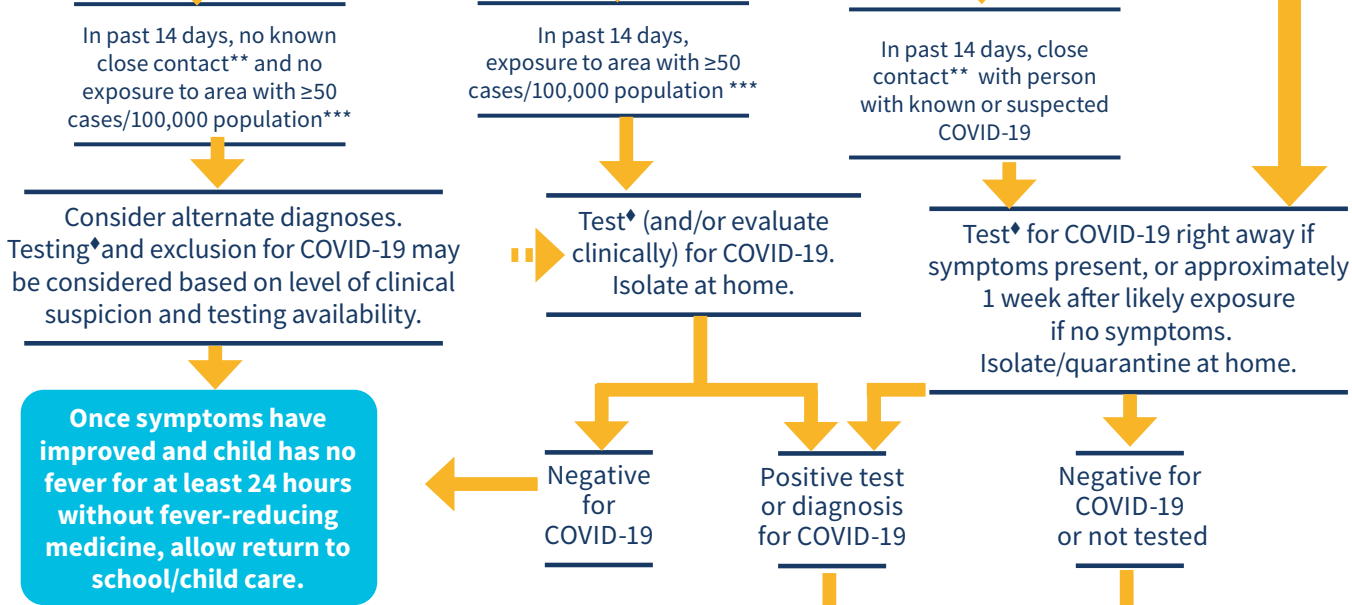


FOR HEALTHCARE PROVIDERS



◆ **Testing** – PCR or antigen (Ag) testing is acceptable. If an Ag test is negative and clinical suspicion for COVID-19 is high, confirm with PCR, ideally within 2 days of the initial Ag test. If PCR testing is not available, clinical discretion can be used in whether to recommend the patient isolate.

Clinical Evaluation for Children with Symptoms of COVID-19* (www.cdc.gov/coronavirus/2019-ncov/hcp/pediatric-hcp.html)



RETURN TO SCHOOL AND CHILD CARE

